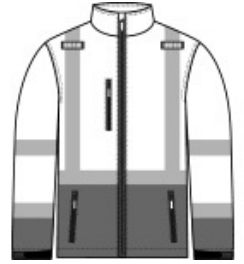


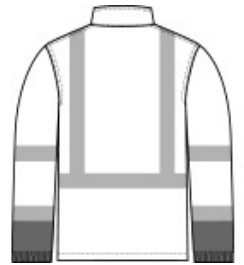


This warm performance soft shell combines superior weather protection with the highest class of visibility.

- 100% polyester woven shell with durable water-repellent (DWR) finish bonded to a water-resistant, breathable film insert and a 100% polyester microfleece lining
- Black bottom front and lower sleeves for a cleaner appearance
- Fabric waterproof rating: 5000MM
- Fabric breathability rating: 5000G/M2
- Full-length interior storm flap with chin guard
- Durable, reflective 2-inch tape meets ANSI 107 requirements and provides 360-degree visibility on body and sleeves; tape is bonded to fabric
- Molded right chest, hand and center front zippers with rubber pulls
- Mic clips at shoulders
- Elastic cuffs with adjustable hook and loop closures and rubber tabs
- Adjustable drawcord hem
- This garment must be fully zipped to be in compliance with ANSI 107 standards



front



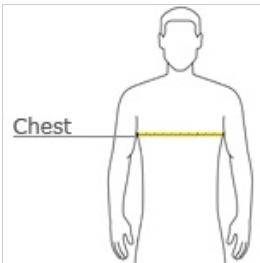
back

**

CARE INSTRUCTIONS

Machine Wash Cold. Only Non-Chlorine Bleach When Needed. Do Not Use Fabric Softener. Tumble Dry Low. Cool Iron If Necessary.

HOW TO MEASURE



CHEST WIDTH

Measure under the arm and around the fullest part of the chest with arms down, keeping tape horizontal.

SIZE CHART

	S	M	L	XL	2XL	3XL	4XL	5XL
Chest	35-37	38-40	41-43	44-46	47-49	50-53	54-57	58-60

COLOR INFORMATION



Safety Yellow